

# Barge Unloader

by WALINGA INC.



# WALINGA

INC.

**TOUGH TO BEAT IN THE LONG RUN**

# Barge Unloader

by WALINGA INC.

BUILT WITHOUT COMPROMISE

Thank you for considering Walinga.

Walinga has been manufacturing pneumatic conveying systems since 1954 and is pleased to supply you with a quality machine that will help maximize efficiencies towards increase profits.

The following pages outline the Walinga Barge Unloader's standard features and numerous available options. Walinga builds to each customers demands. Walinga's engineers will help you select and custom specify the machine that best suits your needs.


WALINGA.COM  
**TOUGH TO BEAT  
IN THE LONG RUN**


Send Walinga an email for more information!

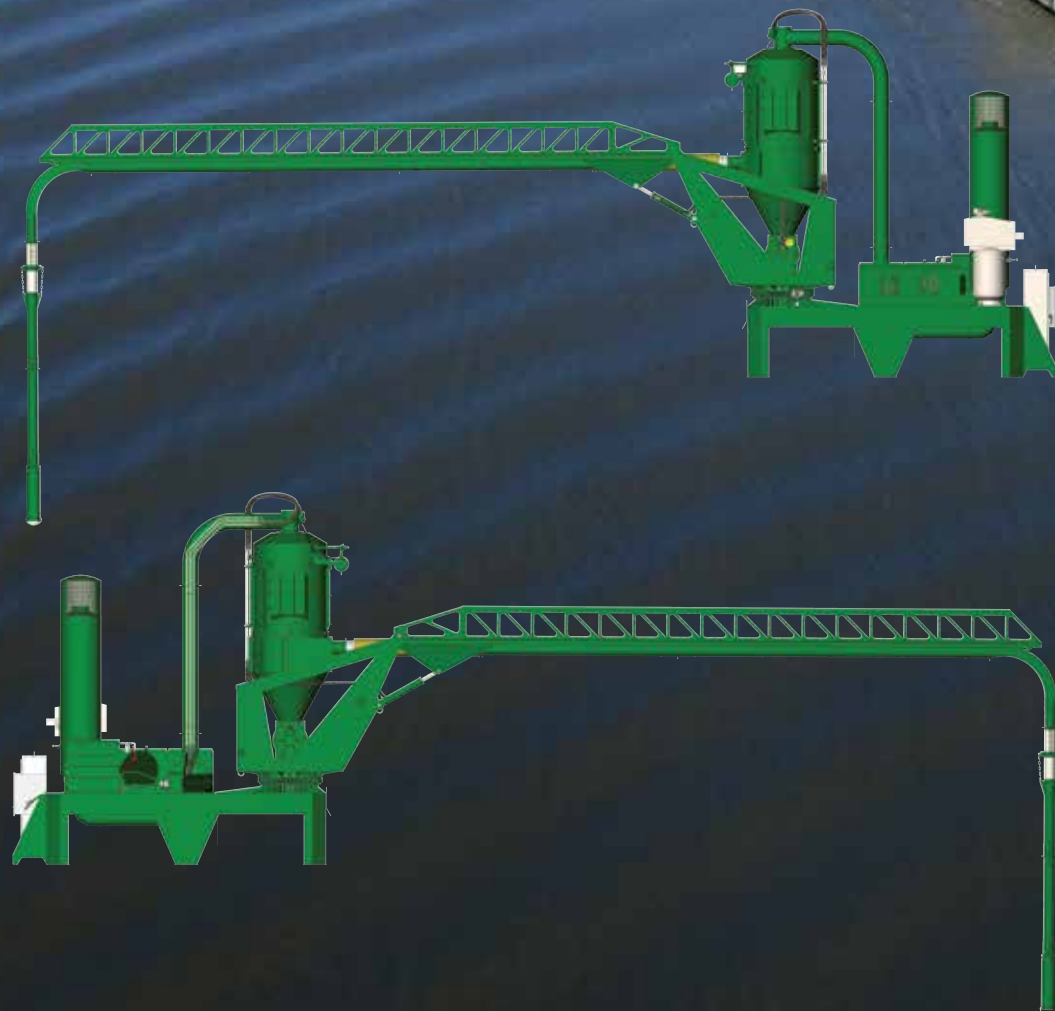
Jacob Broekema  
[jacob.broekema@walinga.com](mailto:jacob.broekema@walinga.com)

WALINGA.COM

 CANADA  
519-787-8227  
Tom Linde

 USA  
1-800-466-1197  
ask for Peter Kingma

 INTERNATIONAL  
+1-519-824-8520  
ask for Jacob Broekema extension 294



Barge Unloader  
by WALINGA INC.

## Necessity; The Mother of Invention.

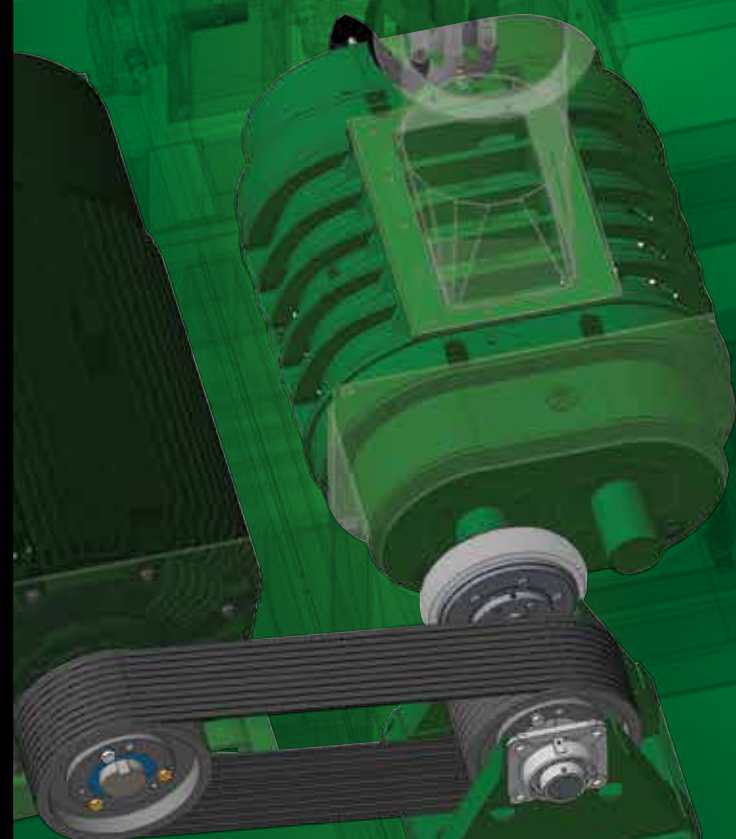
Walinga engineers, working closely with clients to understand their bulk transfer needs, continually evolve Walinga's line of powerful hard working grain transfer solutions. Walinga's new Barge Unloader is leading that evolution.

# 1020 BLOWER

\*Check blower oil level prior to use  
\*Change oil annually or every 100 hrs.

## WALINGA®

System displacement:  
**3400CFM**



### BLOWER

Walinga's 1020 blower displacing 3400 CFM, features Super Hardened Coated housing, impellers, and seal sleeves. The blower is equipped with double spherical roller bearings that are lubricated by an oil splash system. The blower is motor driven via a 1.5 to 1 ratio V belt system that utilizes an automotive belt tensioning system.

**Barge Unloader**

By WALINGA INC.

## BARGE UNLOADER BUILT TO WITHSTAND THE ELEMENTS

It's all in the details, details like welded heavy-duty steel platforms, heavy duty metal covers, Rhino linings on high wear areas, all designed to deliver maximum performance in any environment. A machine for all seasons, Walinga equipment is built to last

### General:

The Walinga Barge Unloader is purpose built to convey free flowing, granular products from barges or vessels.

### Capacity:

When conveying dry wheat, the Walinga Barge Unloader, will unload up to 175 tonnes per hour.

### Consumption:

The standard power on the Barge Unloader is electric producing 250hp/186.5 kW. Diesel power is available as an option; the diesel engine will consume 38 liters/10 Gallons of fuel per hour.

### Safety:

Blower is equipped with overload vacuum relief valve and monitoring gauges. On the front and back of the blower the oil level can be viewed through the sight glass. The Barge Unloader is fully labeled with operational and warning decals for operator's ease and safety. All belt systems are equipped with finger proof guards. A detailed operational manual is supplied with the unit upon arrival. Each new unit is also commissioned by a Walinga expert.

**Barge Unloader**

By WALINGA INC.

## AIRLOCK

A high grade ductile iron, drop through housing airlock. Walinga's nine vane airlock displaces 4.5 cubic feet per revolution. The airlock is directly coupled to a heavy duty hydraulic motor, it is equipped with a variable speed control and rotation is reversible. The vanes are equipped with Hardox adjustable tips.



**Barge Unloader**

by WALINGA INC.

# FOLLOW THE GRAIN, FIND A WALINGA.

## Power:

The Barge Unloader is powered electrically by a 250hp / 186.5 kW motor and is equipped with soft start.

The Barge Unloader's hydraulic system is powered by a dedicated 40hp / 29.84kW electric motor.

## Hydraulics:

The Barge Unloader is equipped with a heavy duty commercial grade hydraulic pump mounted to the drive motor.

It is a complete system that includes:

- Reservoir
- Filter
- Controls
- Oil
- Hydraulic Lines

The hydraulic system drives the airlock, suction & discharge boom movements.

Customers often specify the optional hydraulic control hand held radio remote.

UP TO **40'** LONG  
\*Various lengths available



horizontal suction boom  
**10" Diameter**

**Hydraulically**  
Raise & lower boom

Rotates  
**270 Degrees**

Comes with a flexible receiver inlet hose. It is raised, lowered, and rotated hydraulically.

## SUCTION BOOM

### Near infinite customization:

When facilities or bulk product require unique solutions, experienced Walinga engineers work to ensure any modifications are accommodated early on in the design process. In addition to extensive standard features, Walinga offers optional upgrades including but not limited to:

- LED Boom Lighting Kit
- LED Platform Lighting Kit
- 14" diameter 30' foot long discharge boom
- Client Branded Finish Colours
- Handheld Remote
- Platform mobility options



The boom is equipped with a "marine style" suction nozzle.



### The Receiver Tank

An explosion proof chamber houses multiple dust controlling filters. Designed to National Fire Prevention Association standards, the filters are also self cleaning utilizing Walinga Air Purge technology.



Receiver is lined with a replaceable stainless steel resistant band for prolonged life.

Built without compromise. Walinga knows that anything is only as strong as its weakest link. Every nut and bolt, every hose, every part that makes up the whole are specified to deliver maximum performance and durability.

**30'** LONG

**14"**  
Diameter Auger  
Various lengths available

## DISCHARGE BOOM

Hydraulically driven fully articulated elbow

Rotates 270 Degrees

BUILT TO EXACTING CLIENT SPECIFICATIONS



Walinga's fully functional wireless remotes are programmed to control customer specified Barge Unloader functions. In addition to start and stop, all button functions are clearly labeled. Always consult supplied owners manual.

- Boom LEFT
- Boom UP
- Discharge ON
- Telescoping IN
- Boom RIGHT
- Boom DOWN
- Discharge OFF
- Telescoping OUT

# Remote

The Barge Unloader can be operated by one person

Remote system is operational up to **100'**

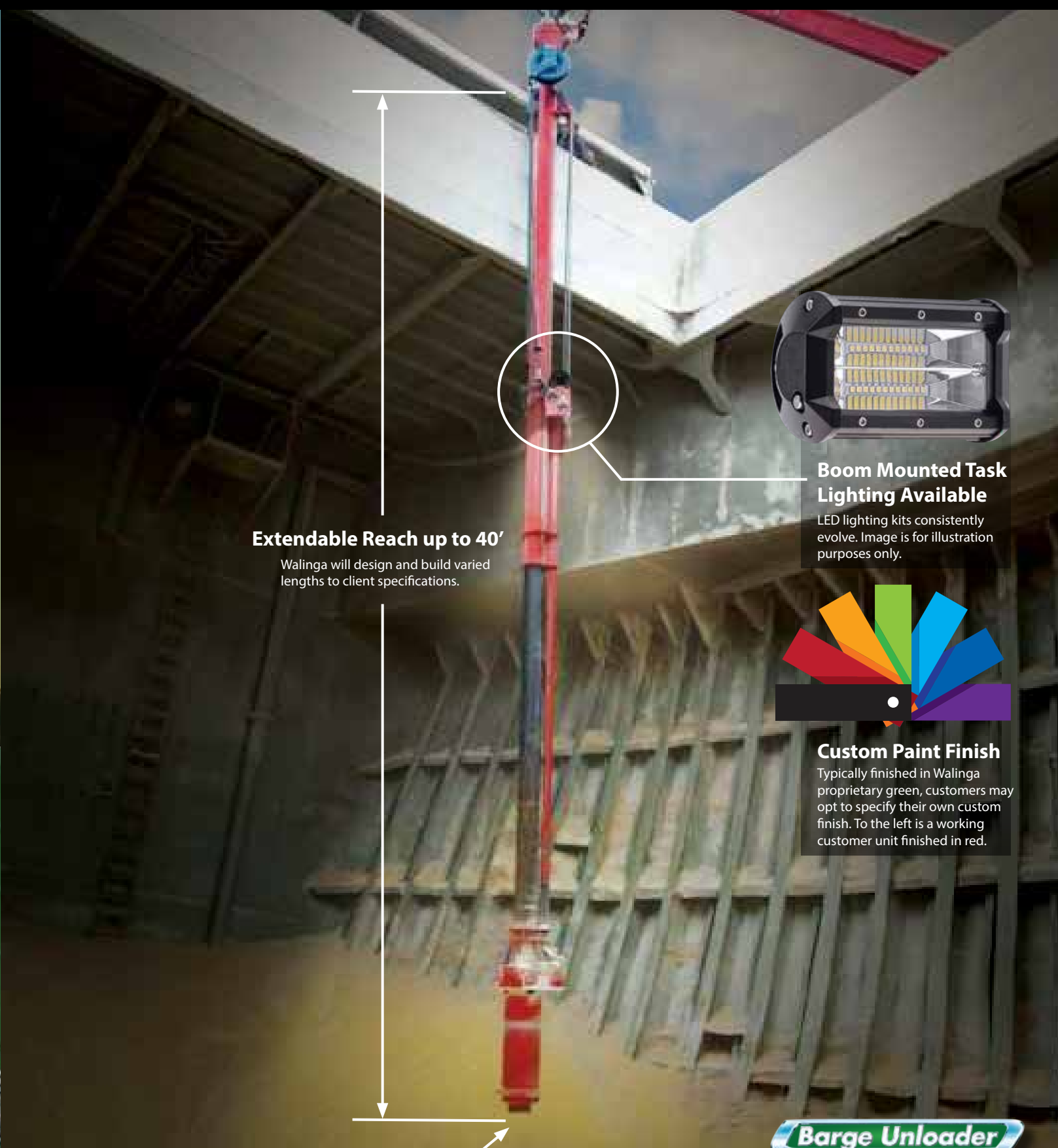
# 8 Function

Radio remote.

Barge Unloader

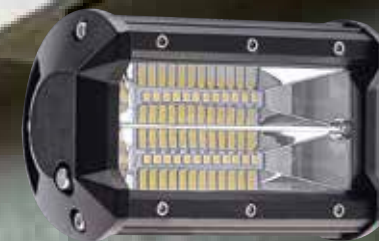
WALINGA INC.

Wireless remotes are programmed to control customer specified Barge Unloaders. Actual functions may differ from shown.



### Extendable Reach up to 40'

Walinga will design and build varied lengths to client specifications.



### Boom Mounted Task Lighting Available

LED lighting kits consistently evolve. Image is for illustration purposes only.



### Custom Paint Finish

Typically finished in Walinga proprietary green, customers may opt to specify their own custom finish. To the left is a working customer unit finished in red.

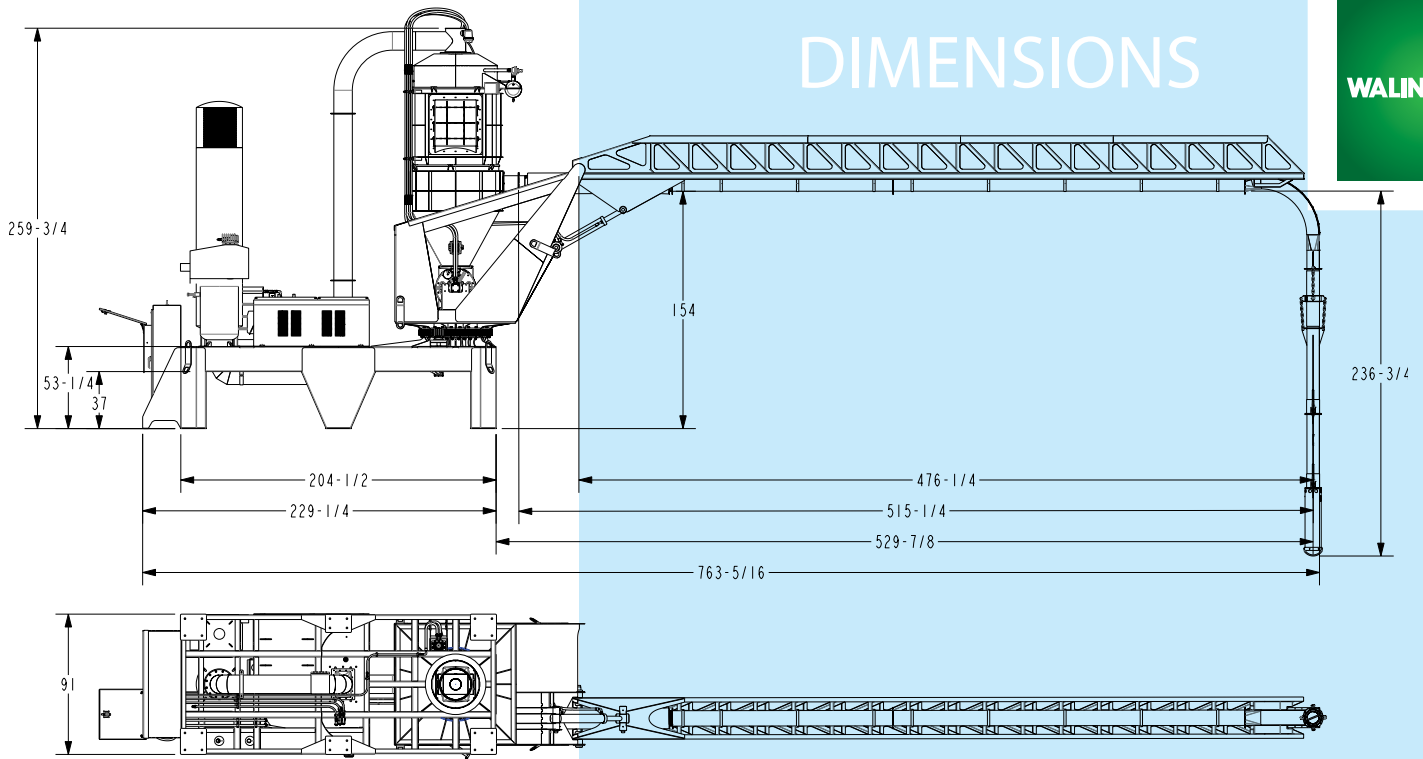
Marine Style Nozzle

Barge Unloader

by WALINGA INC.

# DIMENSIONS

WALINGA® INC.

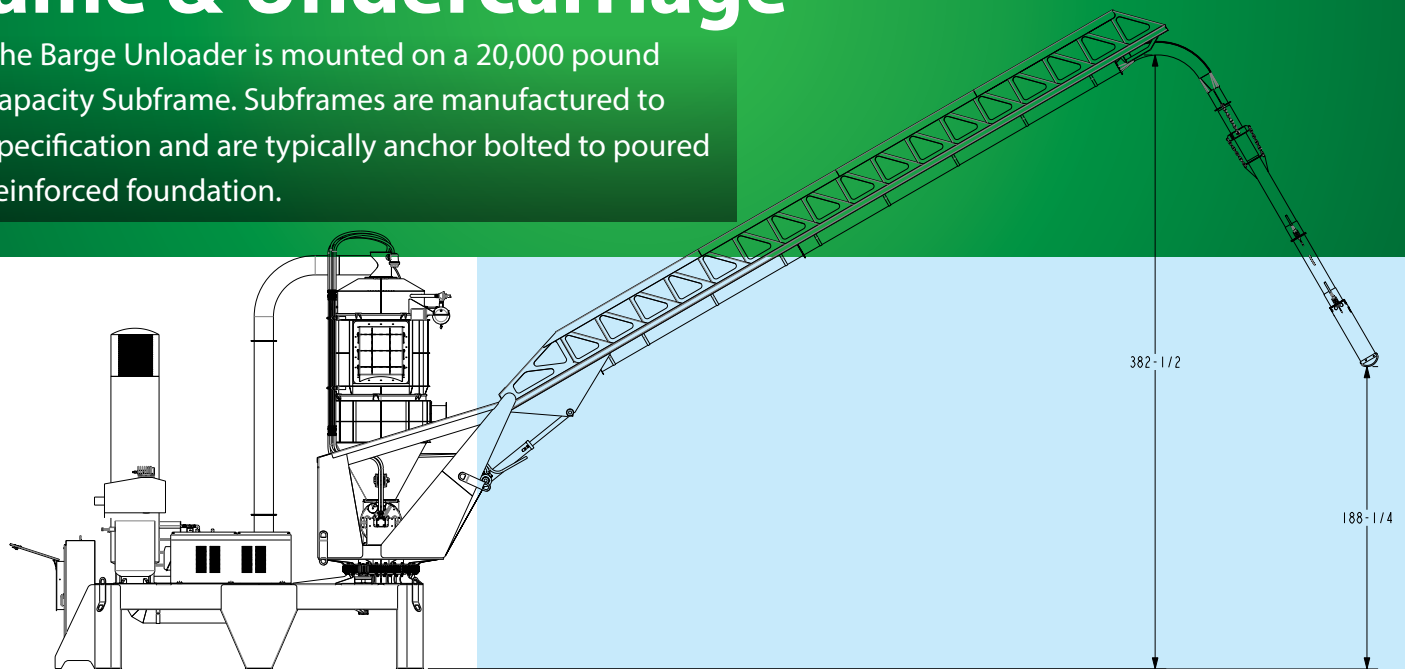


## Paint

The Barge Unloader is acid washed, primed, and painted with heavy duty "baked-on" automotive paint.

## Frame & Undercarriage

The Barge Unloader is mounted on a 20,000 pound capacity Subframe. Subframes are manufactured to specification and are typically anchor bolted to poured reinforced foundation.



**WALINGA.COM**

\* Due to continuous product development, specifications are subject to change without notice.



### Head Office

R.R. #5,  
Guelph, Ontario  
Canada N1H 6J2  
Tel: +1 519.824.8520  
Tel: 888.925.4642  
Fax: +1 519.824.5651

### Michigan

1190 Electric Ave.  
Wayland, Michigan  
USA 49348  
Tel: 616.877.3470  
Tel: 800.466.1197  
Fax: 616.877.3474

### Manitoba

70 3rd Ave. N.E.  
Box 1790  
Carman, Manitoba  
Canada R0G 0J0  
Tel: 204.745.2951  
Fax: 204.745.6309

### Ontario

938 Glengarry Cres.  
Fergus, Ontario  
Canada N1M 2W6  
Tel: 519.787.VACS (8227)  
Fax: 519.787.8210

### Australia

Customvac Australia  
24 Molloy St.  
Toowoomba Qld 4350  
Australia  
Tel: 1800 242 699

